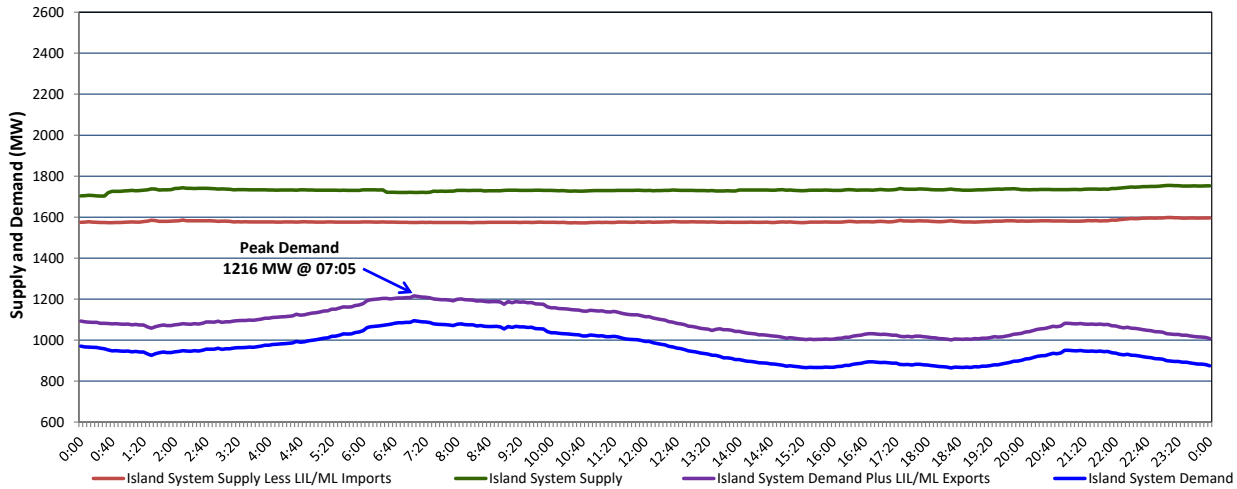


**Newfoundland Labrador Hydro (NLH)
Supply and Demand Status Report Filed Monday, April 18, 2022**

**Section 1
Island Interconnected System Supply, Demand & Exports
Actual 24 Hour System Performance For Friday, April 15, 2022**



Supply Notes For April 15, 2022

- A As of 0857 hours, April 04, 2022, Holyrood Unit 3 unavailable due to planned outage (150 MW).
- B As of 1700 hours, April 10, 2022, Holyrood Unit 2 available but not operating 150 MW (170 MW).
- C As of 0850 hours, April 11, 2022, Bay d'Espoir Unit 1 unavailable due to planned outage (76.5 MW).
- D As of 1604 hours, April 13, 2022, Granite Canal Unit unavailable (40 MW).
- E As of 1254 hours, April 14, 2022, Holyrood Unit 1 available at 140 MW (170 MW).

**Section 2
Island Interconnected Supply and Demand**

Sat, Apr 16, 2022	Island System Outlook ³		Seven-Day Forecast	Temperature (°C)		Island System Daily Peak Demand (MW)	
				Morning	Evening	Forecast	Adjusted ⁷
Available Island System Supply: ⁵	1,751	MW	Saturday, April 16, 2022	1	8	1,215	1,121
NLH Island Generation: ^{4,8}	1,225	MW	Sunday, April 17, 2022	8	8	1,165	1,072
NLH Island Power Purchases: ⁶	160	MW	Monday, April 18, 2022	5	3	1,205	1,111
Other Island Generation:	225	MW	Tuesday, April 19, 2022	-2	-1	1,260	1,165
ML/LIL Imports:	141	MW	Wednesday, April 20, 2022	2	4	1,200	1,106
Current St. John's Temperature & Windchill:	0 °C	N/A	Thursday, April 21, 2022	3	2	1,150	1,057
7-Day Island Peak Demand Forecast:	1,260	MW	Friday, April 22, 2022	4	7	1,080	988

Supply Notes For April 16, 2022

- Notes:
1. Generation outages for running and corrective maintenance are included. These are not unusual for power system operations. They generally do not impact customer supply. The power system operators schedule outages to system equipment whenever possible to coincide with periods when customer demands are low and sufficient supply reserves are available. However, from time to time equipment outages are necessary and reserves may be impacted.
 2. Due to the Island system having no synchronous connections to the larger North American grid, when there is a sudden loss of large generating units there may be a requirement for some customer's load to be interrupted for short periods to bring generation output equal to customer demand. This automatic action of power system protection, referred to as under frequency load shedding (UFLS), is necessary to ensure the integrity and reliability of system equipment. Under frequency events have typically occurred 5 to 8 times per year on the Island Interconnected System and the resultant customer load interruptions are generally less than 30 minutes. With the activation of the Maritime Link frequency controller during the winter of 2018, UFLS events have occurred less frequently.
 3. As of 0800 Hours.
 4. Gross output including station service at Holyrood (24.5 MW) and improved NLH hydraulic output due to water levels (35 MW).
 5. Gross output from all Island sources (including Note 4).
 6. NLH Island Power Purchases include: CBPP Co-Gen, Nalcor Exploits, Rattle Brook, Star Lake, Wind Generation and capacity assistance (when applicable).
 7. Adjusted for curtailable load, market activities and the impact of voltage reduction when applicable.
 8. Due to limitations inherent in the design of combustion turbines, the output of combustion turbines may be reduced in the event that ambient temperatures exceed the threshold.

**Section 3
Island Peak Demand Information
Previous Day Actual Peak and Current Day Forecast Peak**

Fri, Apr 15, 2022	Actual Island Peak Demand ⁹	7:05	1,216 MW
Sat, Apr 16, 2022	Forecast Island Peak Demand		1,215 MW

- Notes: 9. Island Demand / LIL / ML Exports (where applicable) is supplied by NLH generation and purchases, plus generation owned and operated by Newfoundland Power and Corner Brook Pulp & Paper (Deer Lake Power, DLP).